



CISS PDM for MicroStation

Product Structures and Data Management

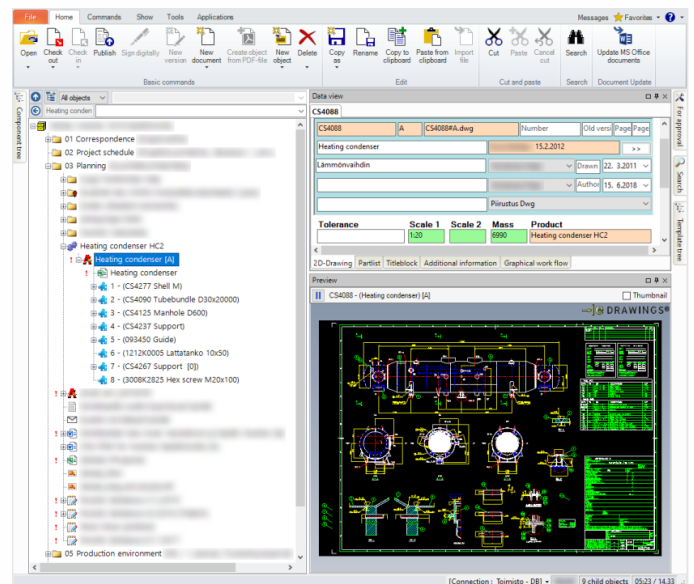
Flexible management of all files related to your project in one place

- ✓ 2D and 3D product structures, drawings and references, parts lists, 3D models and 2D/3D components
- ✓ Version control of drawings, models and structures
- ✓ Project documentation, emails, as well as other Office documents and project-related files

Clear interface

- ✓ Tree-like folder structure makes working easier when you can see which drawings, models and documents are directly related to each other
- ✓ All objects (files) can be edited, added, deleted and moved by dragging
- ✓ Preview window allows you to view any types of files
- ✓ On the info card, you can view and edit:
 - ✎ drawing metadata
 - ✎ parts list
 - ✎ titleblock info
 - ✎ workflow
 - ✎ version history

► **Without opening MicroStation!**



Assemble and manage the structures of several different CAD programs in one product structure tree

The picture shows DGN and DWG structures. Parts lists are stored under the assembly. Any files can be added to the product structure, and therefore the program is extremely well suited for 2D/3D mechanical design. The editing features of parts list are flexible, and with the centralized components management, there is no need to write any standard part or material manually.

CISS PDM is also a document management solution

CISS product family software manages the information and documents of the entire organization - for example, different CAD files, Word, Excel, PowerPoint, pdf, tiff, gif, jpg, photos, videos, emails, etc. All file types can be managed in CISS PDM.

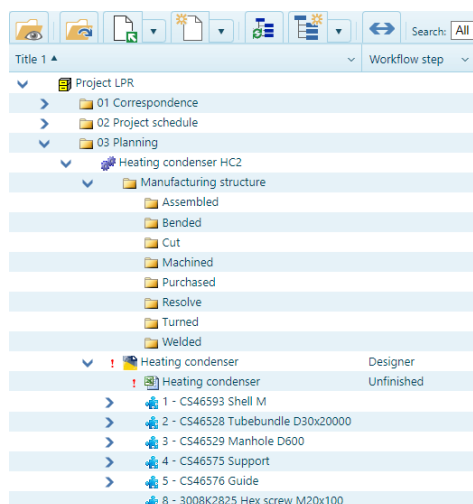
- ✓ Automatic version control
- ✓ Handling and freezing of structures
- ✓ Workflows, user rights
- ✓ Ready-made templates for reporting and the structures of files, projects and folders





CISS PDM for MicroStation

Product Structures and Data Management



Web access

Browser-based CISS Cloud allows users to view and edit the structures and files in CISS PDM regardless of the device being used.

Your workshop or subcontractors can use CISS Cloud to retrieve documents created in CISS PDM, such as files needed for manufacturing. Manufacturing operators can create parts lists online. This ensures that the manufacturing operators always receive the latest versions of drawings and parts lists. Sending drawings, dxf and other documents as email attachments is no longer needed. CISS Cloud ALWAYS has the latest version. Errors caused by incorrect versions are thus completely avoided.

Reporting

Ready-made reporting templates are included in the program, but it is also easy to add your own. Reports can be printed individually or in batches.

Security

Using CISS PDM in a web environment does not differ in any way from normal office use. The level of security is comparable to the level of security used by banks.

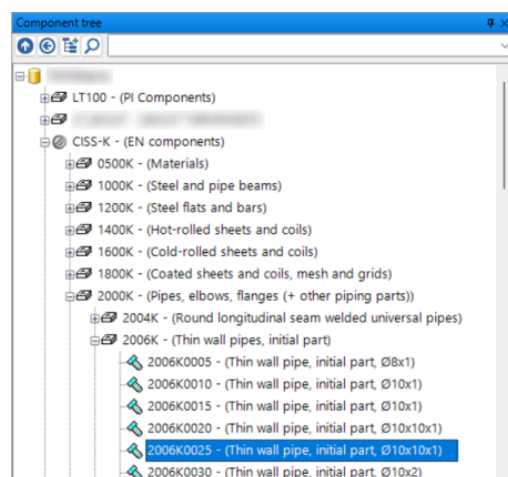
Integration

Integration with different financial management programs and ERP systems is easy with XML interface.

Over 12 000 components

The program contains over 12 000 components that comply with EN standards. The component collection we maintain supports the standardization of components, and enables the simultaneous use of standards from different countries and own component collections.

The user can check from the component info, in which assemblies the component has been used (with version information). Components are available in English and Finnish, and also Russian language support is available.



CISS PDM ensures carefree working

- ✓ Import 2D / 3D structures with a single command
- ✓ Comprehensive search function
- ✓ Integration with Office and Outlook
- ✓ Suitable for Connect Edition as well as V8i
- ✓ Available in different languages (English, Finnish, Swedish and, if necessary, Russian and Chinese)

